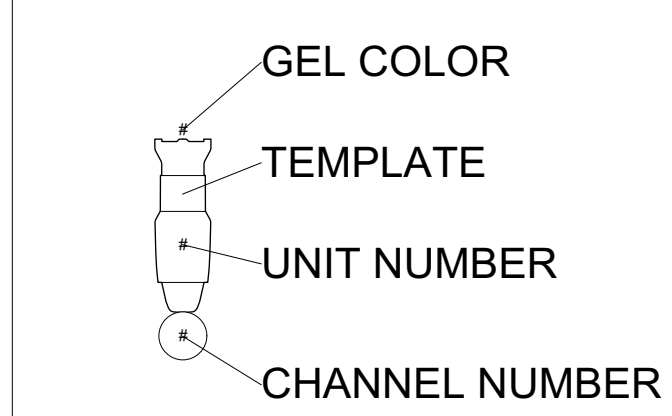


KEY TO SYMBOLS

- ETC CE Source-4 10°
- ETC CE Source-4 19°
- ETC CE Source-4 26°
- ETC CE Source-4 36°
- ETC CE Source-4 50°
- MAC 700 Profile
- ETC Source 4 PAR MCM (MFL)
- 6" Fres
- SL_MR 16_30_PM

Color	Size	Count
#	6.25"	1
L106	6.25"	4
N/C	6.25"	28
N/C	7.5"	16
R02	6.25"	7
R09 + R132	6.25"	14
R132	6.25"	5
R132	10"	5
R21	6.25"	6
R26	7.5"	15
R316	6.25"	2
R318	6.25"	8
R44 + R132	6.25"	15
R47 + R132	6.25"	1
R67 + R132	6.25"	10
R68	7.5"	15
R68 + R132	6.25"	16
R90	7.5"	15

LABEL LEGEND



NOTES:

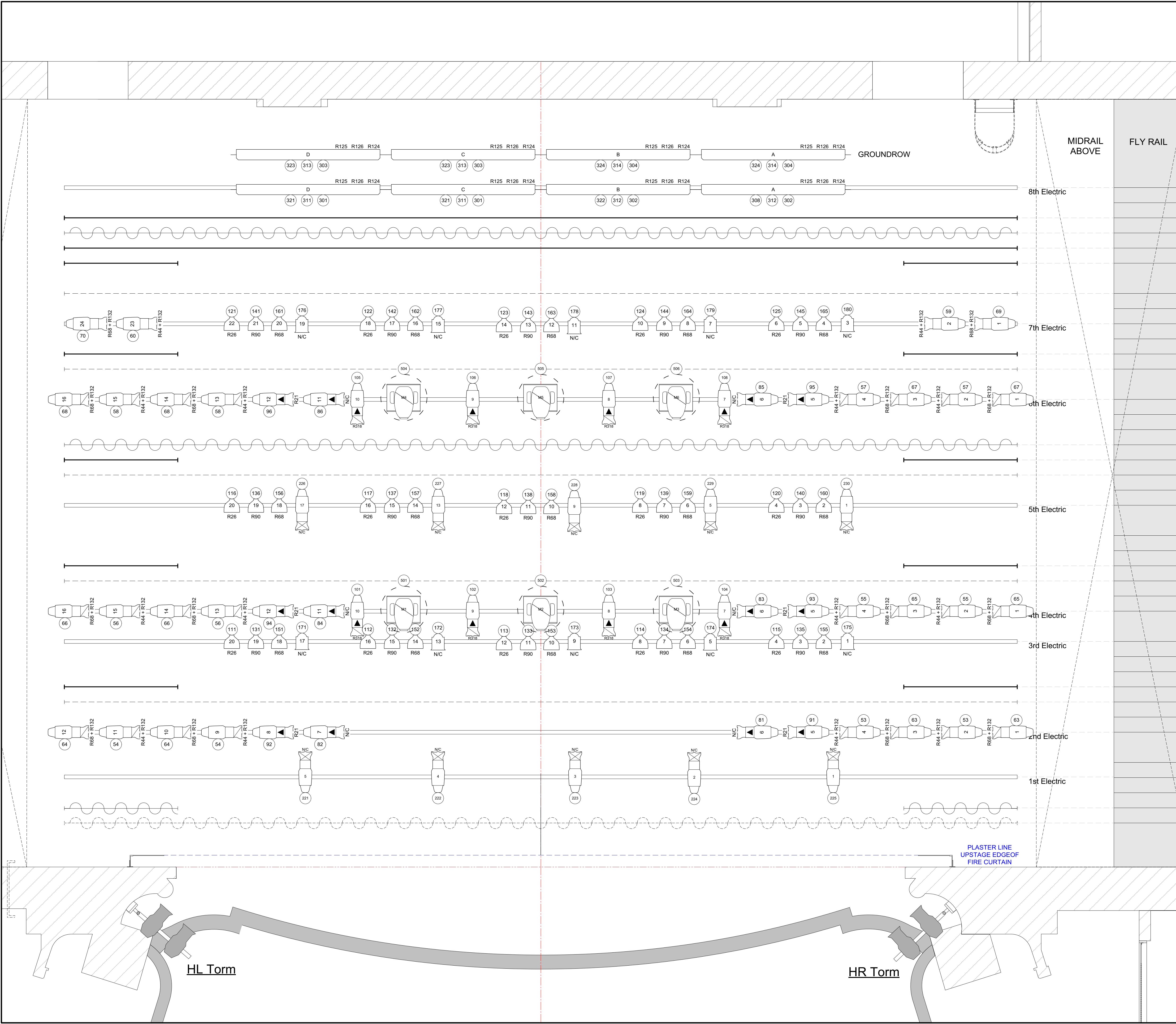
- All instruments in the Cove are lamped at 750w. All other instruments are lamped at 575w.
- All Source Four Pans in the Rep Plot have Medium Flood Lens. A full set of lenses is available for each Pan per Discussion with Production Coordinator/Technical Director.
- Not all Front of House Positions are drawn in Position.
- Rep Color and Patterns are subject to change.
- Please Call 413-448-9084 EX. 54 for more information
- Please consult the Colonial Rep Plot Paperwork for more information.
- Please contact the Production Coordinator/Technical Director for additional Colonial Inventory that is not used for the Rep Light Plot.
- Please note that the Mac 700 Moving Lights are subject to availability. Please contact the Production Coordinator/Technical Director for availability and information regarding the intelligent lighting package at the Colonial Theatre.

COLONIAL REP PLOT

THE COLONIAL THEATRE	
111 SOUTH STREET, PITTSFIELD MA	
PRODUCTION COORDINATOR:	AMANDA WARRINER
TECHNICAL DIRECTOR:	SAVANAH RELOS
HOUSE ELECTRICIAN:	LUCAS PAWELSKI
DRAWN BY:	LUCAS PAWELSKI
SCALE:	1/2" = 1'
DATE:	4/3/2018
PLATE:	1 OF 3

OVERSTAGE LX

LS #	REP LINESET SCHEDULE
38	8TH ELECTRIC
37	EMPTY
36	CYC/RP
35	UPSTAGE TRAVELER
34	BLACK SCRIM
33	#5 BLK LEGS
32	#5 BLK BORDER
31	EMPTY
30	7TH ELECTRIC
29	EMPTY
28	#4 BLK LEG
27	#4 BLK BORDER
26	6TH ELECTRIC
25	EMPTY
24	EMPTY
23	MIDSTAGE TRAVELER
22	#3 BLK LEGS
21	#3 BLK BORDER
20	EMPTY
19	5TH ELECTRIC
18	EMPTY
17	EMPTY
16	#2 BLK LEGS
15	#2 BLK BORDER
14	EMPTY
13	4TH ELECTRIC
12	3RD ELECTRIC
11	EMPTY
10	EMPTY
9	#1 BLK LEGS
8	#1 BLK BORDER
7	EMPTY
6	2ND ELECTRIC
5	EMPTY
4	1ST ELECTIC
3	EMPTY
2	MAINE DRAPE
1	MAIN VALANCE

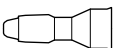




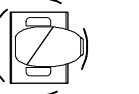


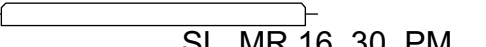


HL Torm

HR Torm





PLASTER LINE
UPSTAGE EDGE OF
FIRE CURTAIN

KEY TO SYMBOLS

-  ETC CESource-4 10°
-  ETC CE Source-4 19°
-  ETC CE Source 4 26°
-  ETC CE Source-4 36°
-  ETC CE Source-4 50°
-  MAC 700 Profile
-  ETC Source 4 PAR MCM (MFL)
-  6" Fres
-  SL_MR 16_30_PM

Color #	Size	Count
L106	6.25"	1
N/C	6.25"	4
N/C	6.25"	28
N/C	7.5"	16
R02	6.25"	7
R09 + R132	6.25"	14
R132	6.25"	5
R132	10"	5
R21	6.25"	6
R26	7.5"	15
R316	6.25"	2
R318	6.25"	8
R44 + R132	6.25"	15
R44 + R132	6.25"	1
R67 + R132	6.25"	10
R68	7.5"	15
R68 + R132	6.25"	16
R90	7.5"	15

LABEL LEGEND

-  GEL COLOR
-  TEMPLATE
-  UNIT NUMBER
-  CHANNEL NUMBER

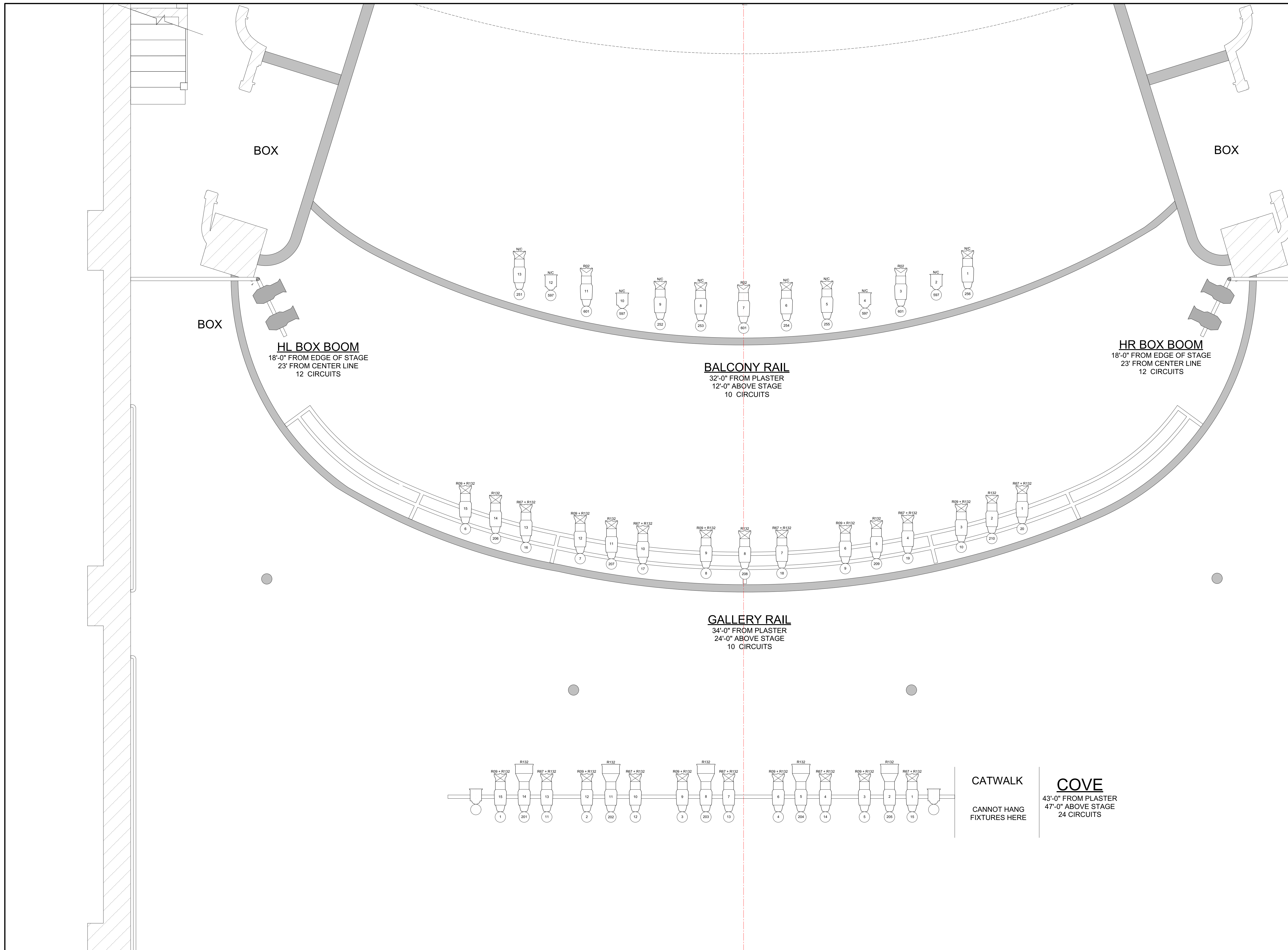
NOTES:

- All instruments in the Cove are lamped at 750w. All other instruments are lamped at 575w.
- All Source Four Pars in the Rep Plot have Medium Flood Lens. A full set of lenses is available for each Par per Discussion with Production Coordinator/Technical Director.
- Units on Trims and Box Booms are hung on 3" Safer Siderams.
- Not all Front of House Positions are drawn in Position.
- Rep Color and Patterns are subject to change.
- Please Call 413-448-9084 EX. 54 for more information
- Please consult the Colonial Rep Plot Paperwork for more information.
- Please contact the Production Coordinator/Technical Director for additional Colonial Inventory that is not used for the Rep Light Plot.
- Please note that the Mac 700 Moving Lights are subject to availability.
- Please contact the Production Coordinator/Technical Director for availability and information regarding the intelligent lighting package at the Colonial Theatre.

COLONIAL REP PLOT

THE COLONIAL THEATRE	
111 SOUTH STREET, PITTSFIELD MA	
PRODUCTION COORDINATOR	AMANDA WARRINER
TECHNICAL DIRECTOR	SAVANAH RELOS
HOUSE ELECTRICIAN	LUCAS PAWELSKI
DRAWN BY	LUCAS PAWELSKI
SCALE	1/2" = 1'
DATE	4/3/2018
PLATE	2 OF 3

FRONT OF HOUSE LX



BOX

BOX

BOX

HL BOX BOOM
18'-0" FROM EDGE OF STAGE
23' FROM CENTER LINE
12 CIRCUITS

HR BOX BOOM
18'-0" FROM EDGE OF STAGE
23' FROM CENTER LINE
12 CIRCUITS

BALCONY RAIL
32'-0" FROM PLASTER
12'-0" ABOVE STAGE
10 CIRCUITS

GALLERY RAIL
34'-0" FROM PLASTER
24'-0" ABOVE STAGE
10 CIRCUITS

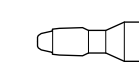
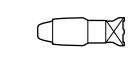
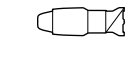
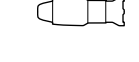




CATWALK

CANNOT HANG
FIXTURES HERE

COVE

43'-0" FROM PLASTER
47'-0" ABOVE STAGE
24 CIRCUITS

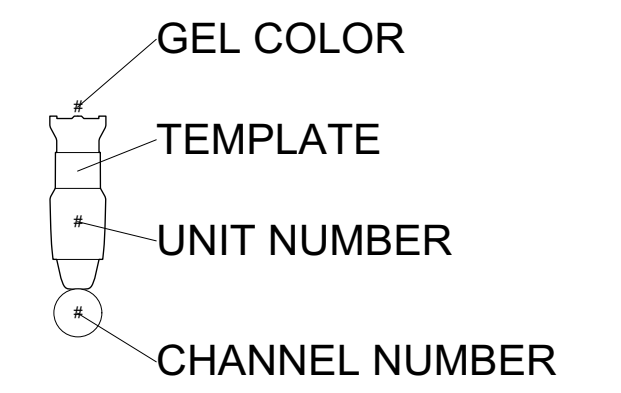
KEY TO SYMBOLS

-  ETC CESource-4 10°
-  ETC CE Source-4 19°
-  ETC CE Source 4 26°
-  ETC CE Source-4 36°
-  ETC CE Source-4 50°
-  MAC 700 Profile
-  ETC Source 4 PAR MCM (MFL)
-  6" Fres

SL_MR 16_30_PM

Color #	Size	Count
L106	6.25"	4
N/C	6.25"	28
N/C	7.5"	16
R02	6.25"	7
R09 + R132	6.25"	14
R132	6.25"	5
R132	10"	5
R21	6.25"	6
R26	7.5"	15
R316	6.25"	2
R318	6.25"	8
R44 + R132	6.25"	15
R44 + R132	6.25"	1
R67 + R132	6.25"	10
R68	7.5"	15
R68 + R132	6.25"	16
R90	7.5"	15

LABEL LEGEND



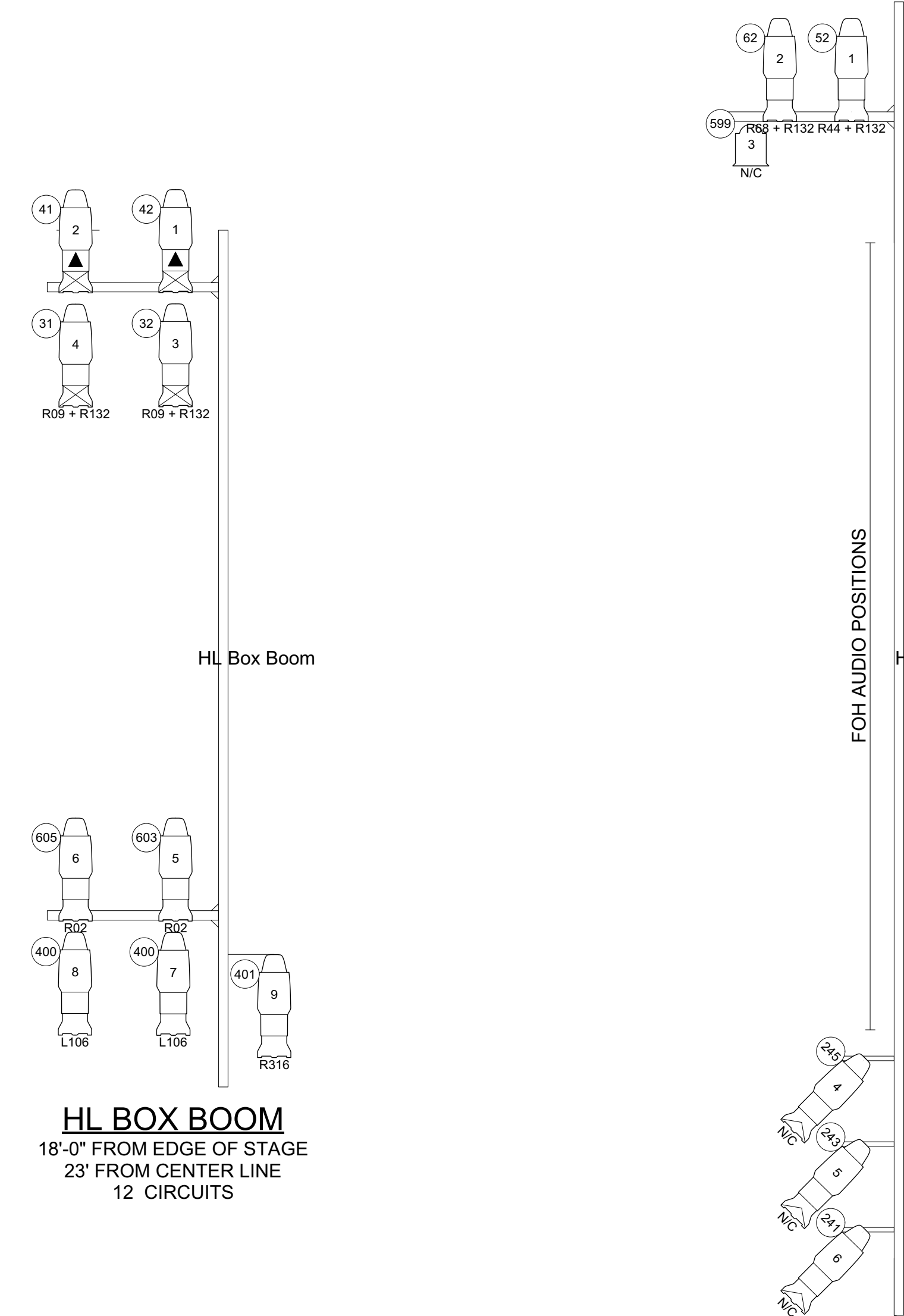
NOTES:

- All instruments in the Cove are lamped at 750w. All other instruments are lamped at 575w.
- All Source Four Pars in the Rep Plot have Medium Flood Lens. A full set of lenses is available for each Par per Discussion with Production Coordinator/Technical Director.
- Units on Torms and Box Booms are hung on 3' Safer Siderams.
- Not all Front of House Positions are drawn in Position.
- Rep Color and Patterns are subject to change.
- Please Call 413-448-9084 EX. 10 for more information
- Please consult the Colonial Rep Plot Paperwork for more information.
- Please contact the Production Coordinator/Technical Director for additional Colonial Inventory that is not used for the Rep Light Plot.
- Please note that the Mac 700 Moving Lights are subject to availability.
- Please contact the Production Coordinator/Technical Director for availability and information regarding the intelligent lighting package at the Colonial Theatre.

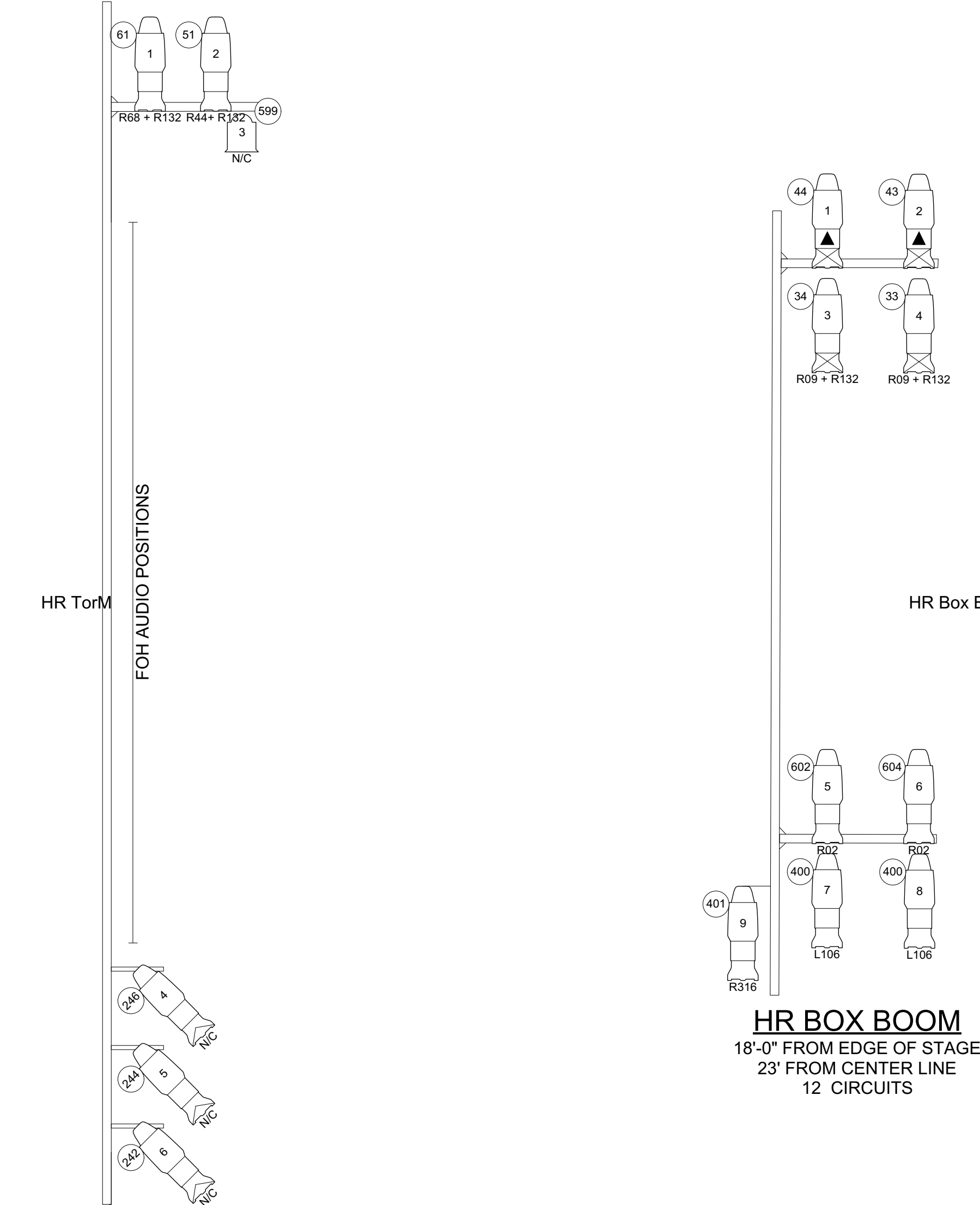
COLONIAL REP PLOT

THE COLONIAL THEATRE	
111 SOUTH STREET, PITTSFIELD MA	
PRODUCTION COORDINATOR:	AMANDA WARRINER
TECHNICAL DIRECTOR:	SAVANAH RELOS
HOUSE ELECTRICIAN:	LUCAS PAWELSKI
DRAWN BY:	LUCAS PAWELSKI
SCALE:	1/2" = 1'
PLATE:	3 OF 3
DATE:	4/3/2018

BOX BOOMS AND TORMS LX



HL BOX BOOM
18'-0" FROM EDGE OF STAGE
23' FROM CENTER LINE
12 CIRCUITS



HR BOX BOOM
18'-0" FROM EDGE OF STAGE
23' FROM CENTER LINE
12 CIRCUITS