

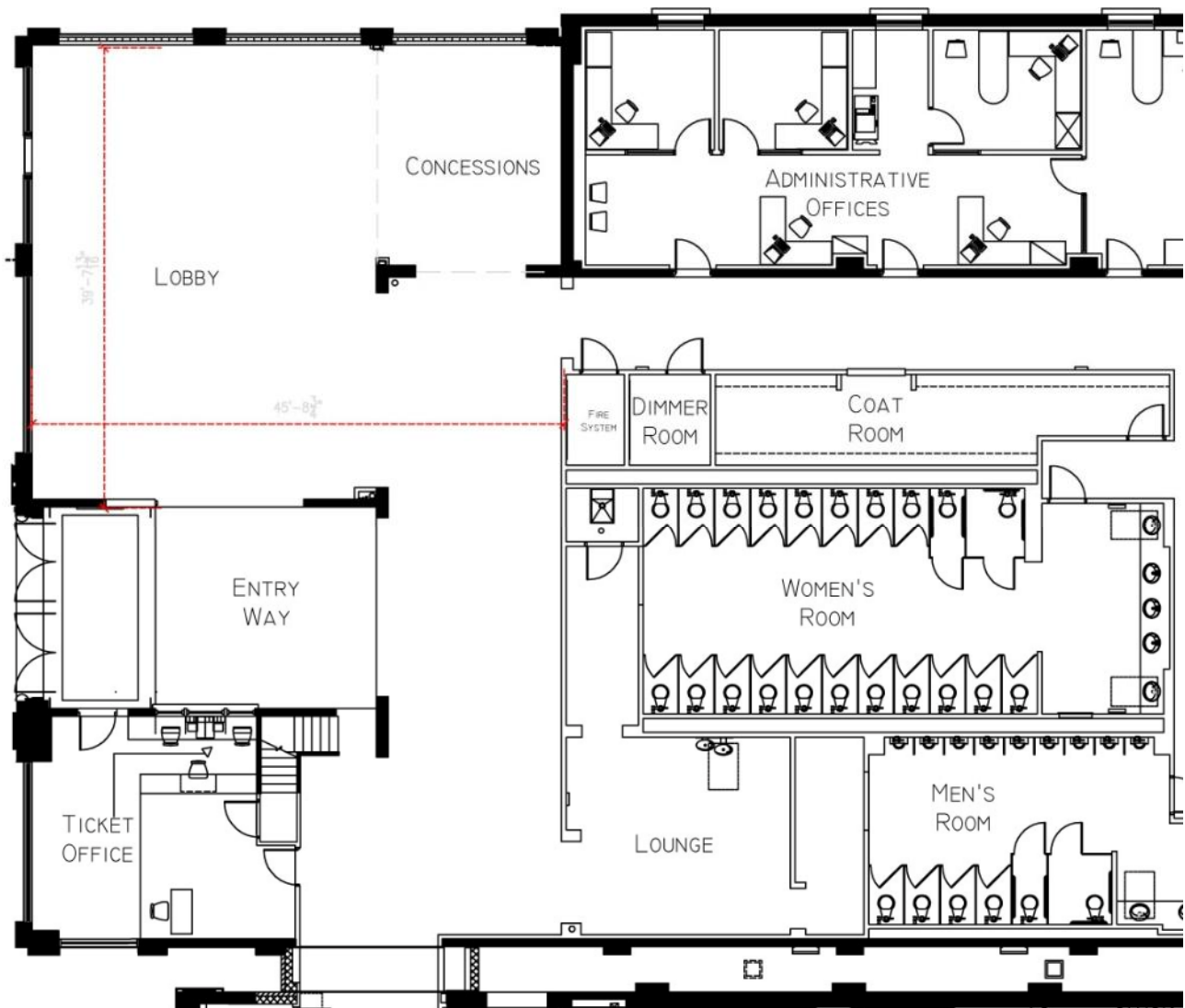


**The Colonial Theatre**  
**111 South Street, Pittsfield, MA 01201**  
[www.thecolonialtheatre.org](http://www.thecolonialtheatre.org)

# Colonial Theatre



MAIN LOBBY:















This architectural floor plan illustrates the interior of the Old Edwards School House, which has been converted into a performance space. The plan is oriented with the entrance at the top. At the top is the **HISTORIC LOBBY**, which contains a staircase on the right and a set of double doors in the center. Below the lobby is the **AUDIENCE CHAMBER**, a large, semi-circular space with tiered seating. In the center of the audience chamber is a **SOUND BOARD** area. Below the audience chamber is the **ORCHESTRA PIT**, a semi-circular area with a curved front edge. In front of the orchestra pit is a stage area with a dashed line indicating the stage edge. The stage is set with 12 circular tables, each surrounded by 8 chairs, arranged in a 3x4 grid. The plan also shows various structural elements, including walls, doors, and stairs, as well as a small **RESTROOM** area on the right side of the audience chamber.





Piano Event onstage with seating:



Small Cocktail Party:





Dance Party onstage with extended bar:







Backstage Space:



Long Table Setup:

